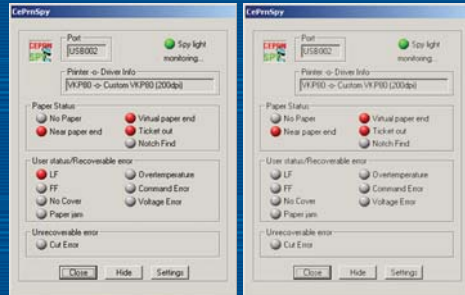


Status Monitor

additional printing driver component that gives remote visibility of paper and printer status, jams, near-end of paper and end of paper status and information on the number of tickets or prints.

The software can even be set to send email alerts or SMS, making easier remote maintenance operations.



Status Monitor

VKP80

VKP80 is the last generations of ATMs, Kiosks and Ticket Printers with high printing speed, 220mm/sec and a very small footprint.

Paper width 60/80/82.5mm, adjustable by the user. Paper thickness 60/100 gr/m2.

Printer can drag up to 180mm paper roll diameter. Holder for 135mm paper roll diameter is available. Possibility to place the roll support in any positions. High reliability autocutter.

"Ejecting" and "retracting" ticket functions.

Paper outlet mouth lighting during ticket presentation. Paper pre-tensioner system for high capability paper roll. Serial RS232 + USB interface.

Sensors: paper end, black mark, ticket availability, opening of printing unit and near paper end on roll support.

VKP80 II

Restyling of VKP80 printer with new performance and innovative design.

Auto-balance and adjustable paper roll support.

Easy paper loading - Ethernet interface.

Paper thickness 60/120gr/m2

100 Km Head life - Cutter life 1.000.000 cuts.

Printer can drag up to 180mm paper roll diameter on lower and back position and max 150mm on upper roll support position.

New Full Driver

unique auto-installer software, very easy to use, including standard driver info, status monitor, logo and font editor !



VKP Printers

	VKP80	VKP80 II
Printing method	Thermal fixed head	
Resolution	203 dpi (8 dots/mm)	
Printing speed	High Quality >100 mm/sec, Normal >180 mm/sec, High Speed >220 mm/sec	
Paper width	60/80/82.5 mm	
Roll dimension	max 180mm	max 180mm (150mm with paper roll on upper position)
Print direction	Straight, 90°, 180°, 270°	
Type styles	Normal, 1x to 8x height and width, reverse, underscored, italic, bold	
Character sets	PC437, PC850, PC860, PC863, PC865, PC858	
Emulation	CUSTOM/POS	
Interfaces	RS232 + USB	RS232+USB+Ethernet
Data buffer	16 Kbyte	
Flash memory	384 Kbyte	
Graphics memory	2 logos of 608 x 862 dots (for 80/82.5mm paper width)	
Driver	Full Driver for win 2K, XP; Linux driver	
Software tools	Font Editor; Logo Editor; Status Monitor	
Power supply	24 Vdc±10%	
Power consumption*	2.2A	
MTBF**	250.000 hours	350.000 hours
Head life	50Km / 100M pulses	100Km / 100M pulses
MCFB	300.000 cutter life	1.000.000 cutter life
Dimensions (mm)	120x121x140	
Weight	2.1Kg	1.9Kg



*average (50% dots on)

**electronic board

VKP80

Paper Width from 60 to 82.5mm

Very Fast: up to 220mm/sec

Multi-Position Paper Roll

Ejecting and Retracting Function

Paper Mouth with Light